

Reka River Basin Barrier Inventory

Eva Horvat, Institute for ichthyological and ecological research,
REVIVO

April, 2024



**OPEN
RIVERS
PROGRAMME**





WHO WE ARE

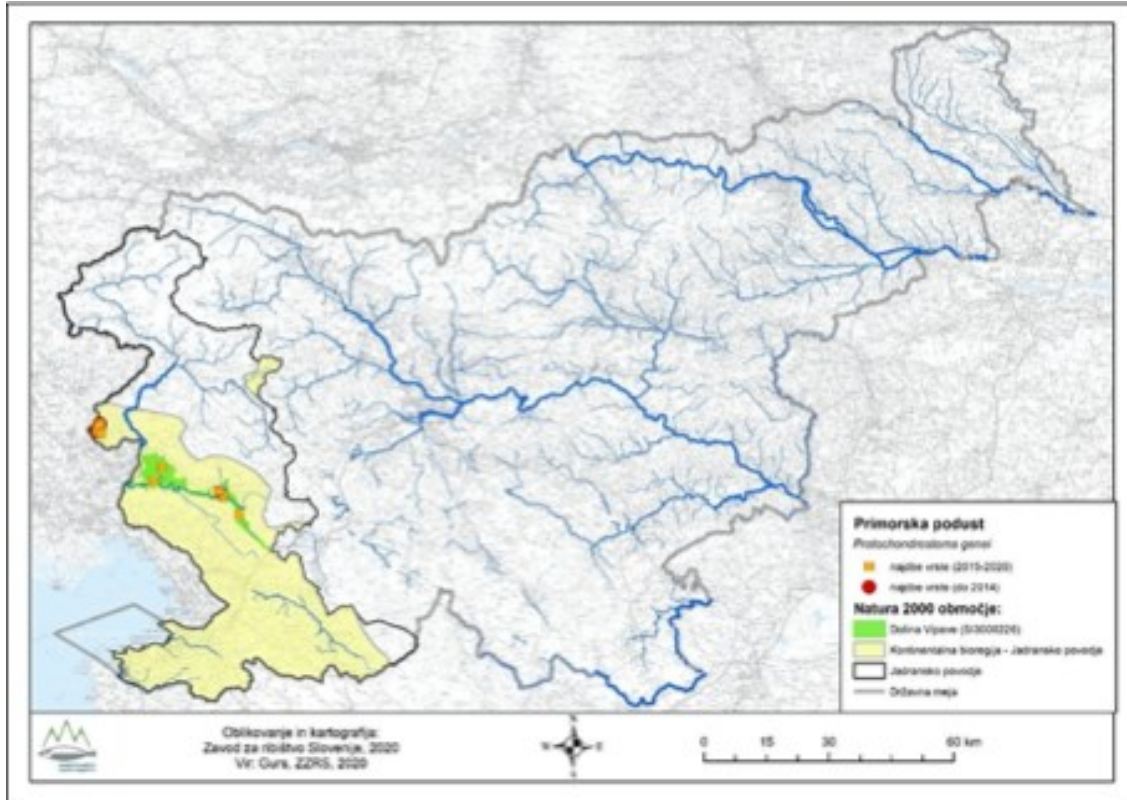
WHAT WE DO

- REVIVO, Slovenian NGO;
- Freshwater and marine ecosystems;
- The field of work: research, educational and awareness-raising activities, and stakeholder engagements.





Rivers and river barriers in Slovenia



61.781 barriers



→ 51.859 Danube River Basin



→ 9.922 Adriatic Basin



→ 44.580,80 km of rivers



→ On average 720 m one barrier;



→ Is that true?

Reka River Basin

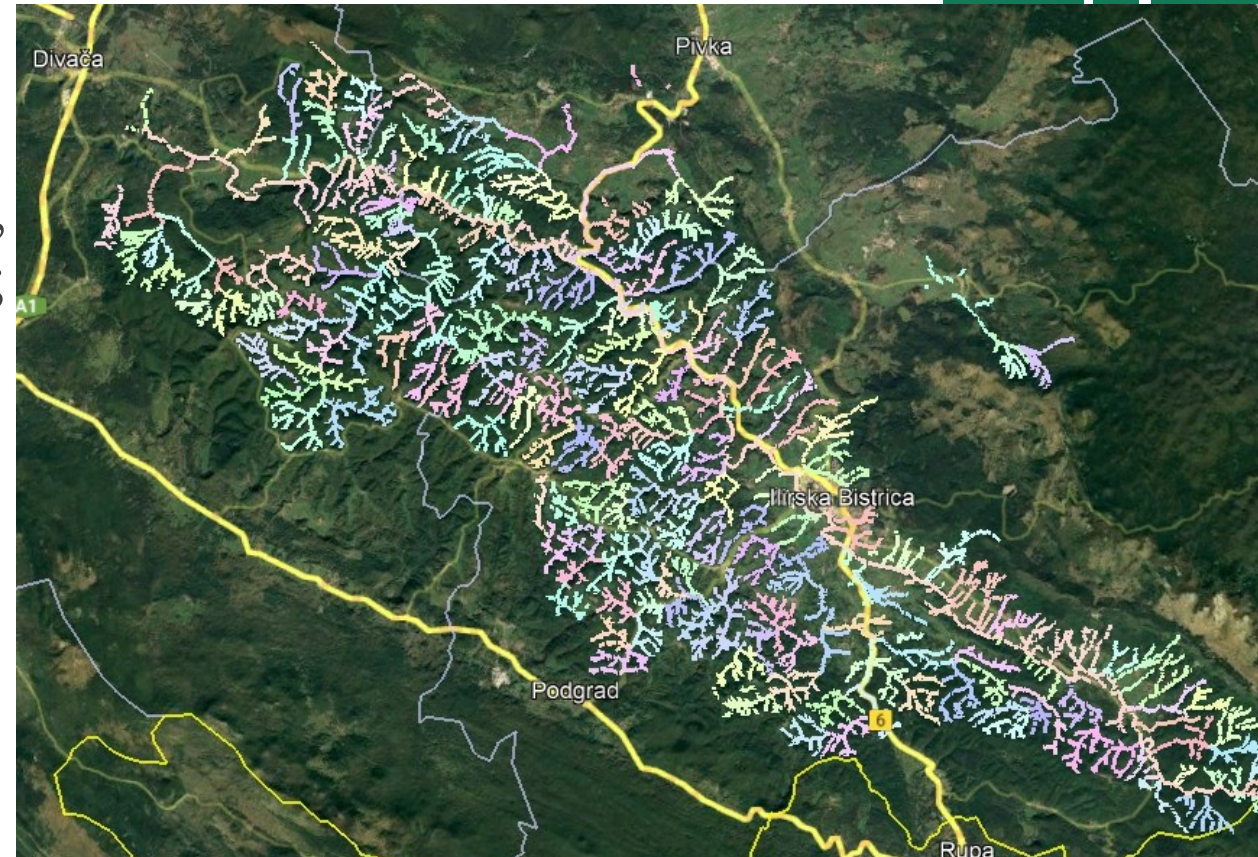
- 54 km long;
- International River
- Natura 2000 Site, Ecologically important area, protected area (Regional park Škocjan Caves);
- Rare fish species: South european nase (*Protochondrostoma genei*), marble trout (*Salmo marmoratus*);



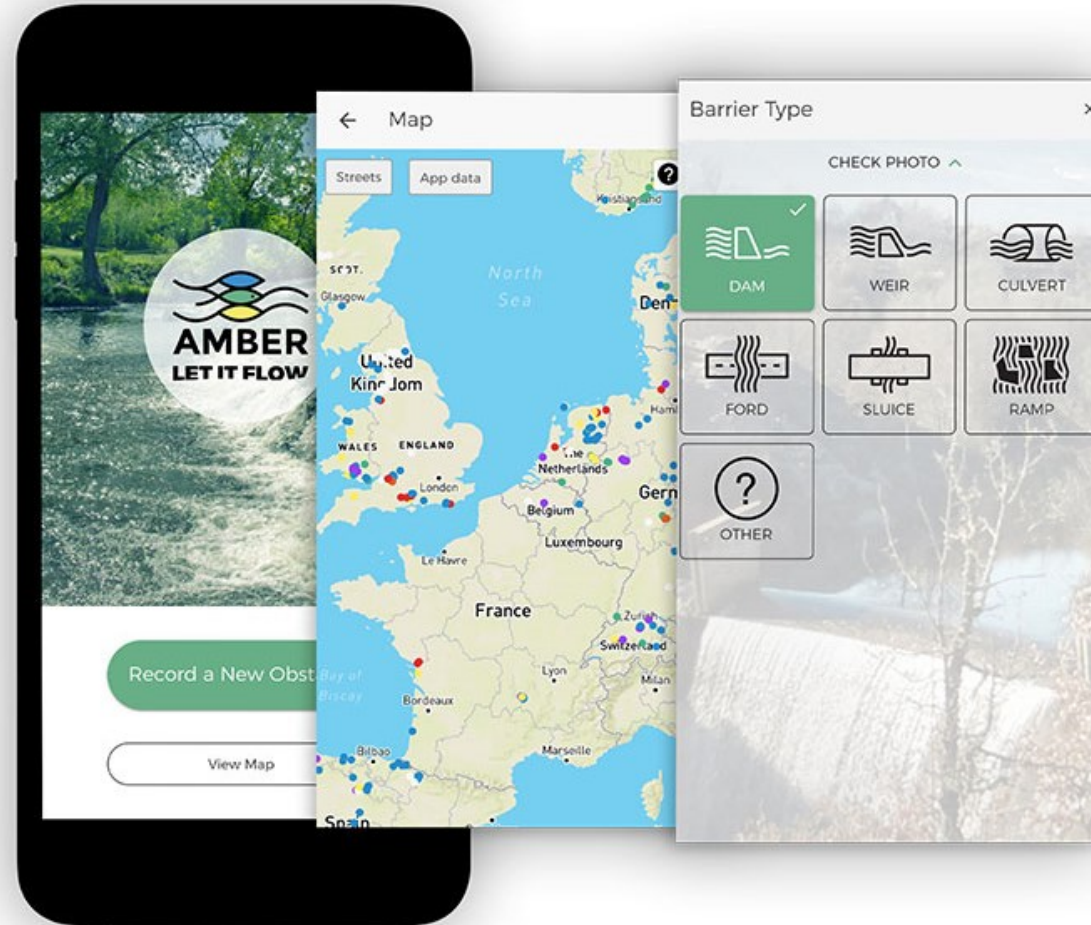
<https://www.park-skocjanske-jame.si/en/>



<https://www.bioaquae.eu/>

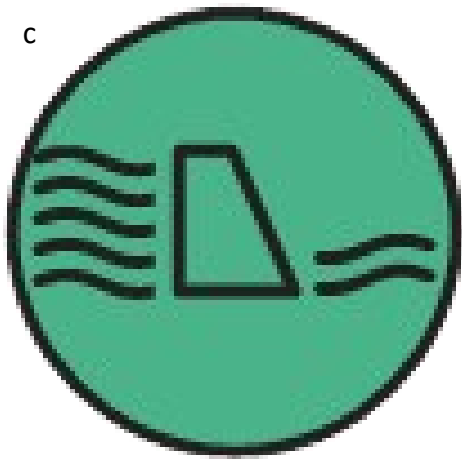


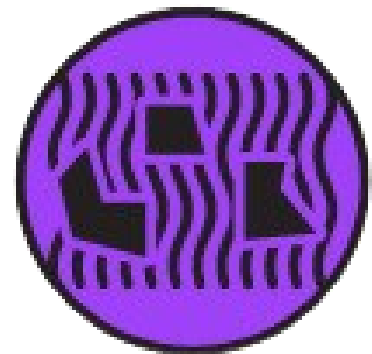
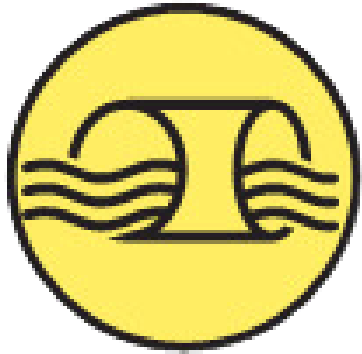
Reka River Barrier Inventory with Barrier Tracker App





Type of river barriers already known to the 98 % participants
before the tracking events?





EU's biodiversity strategy for 2030

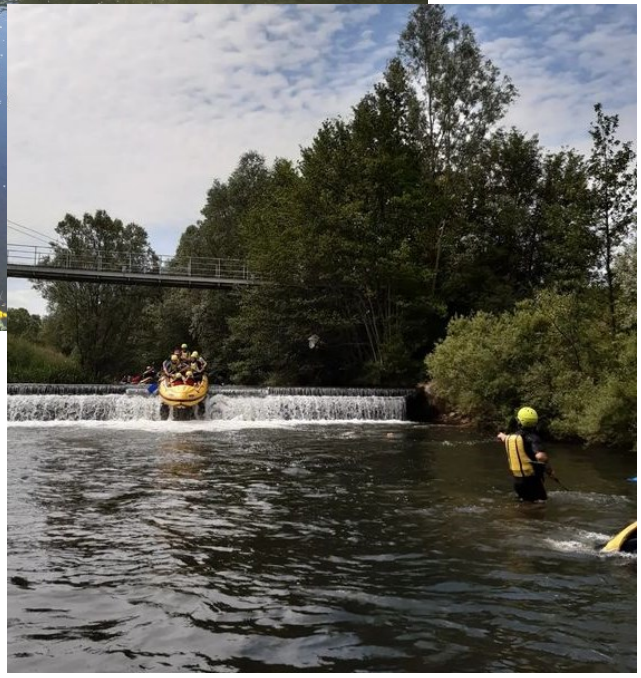
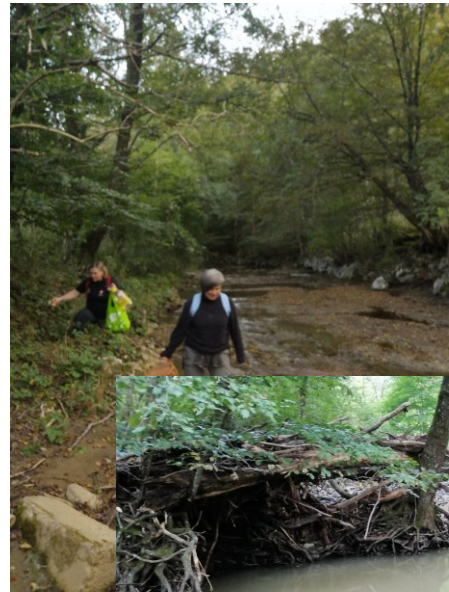
Fish migration

Flood protection

EU Green Deal



flow



NBS



25.000 km

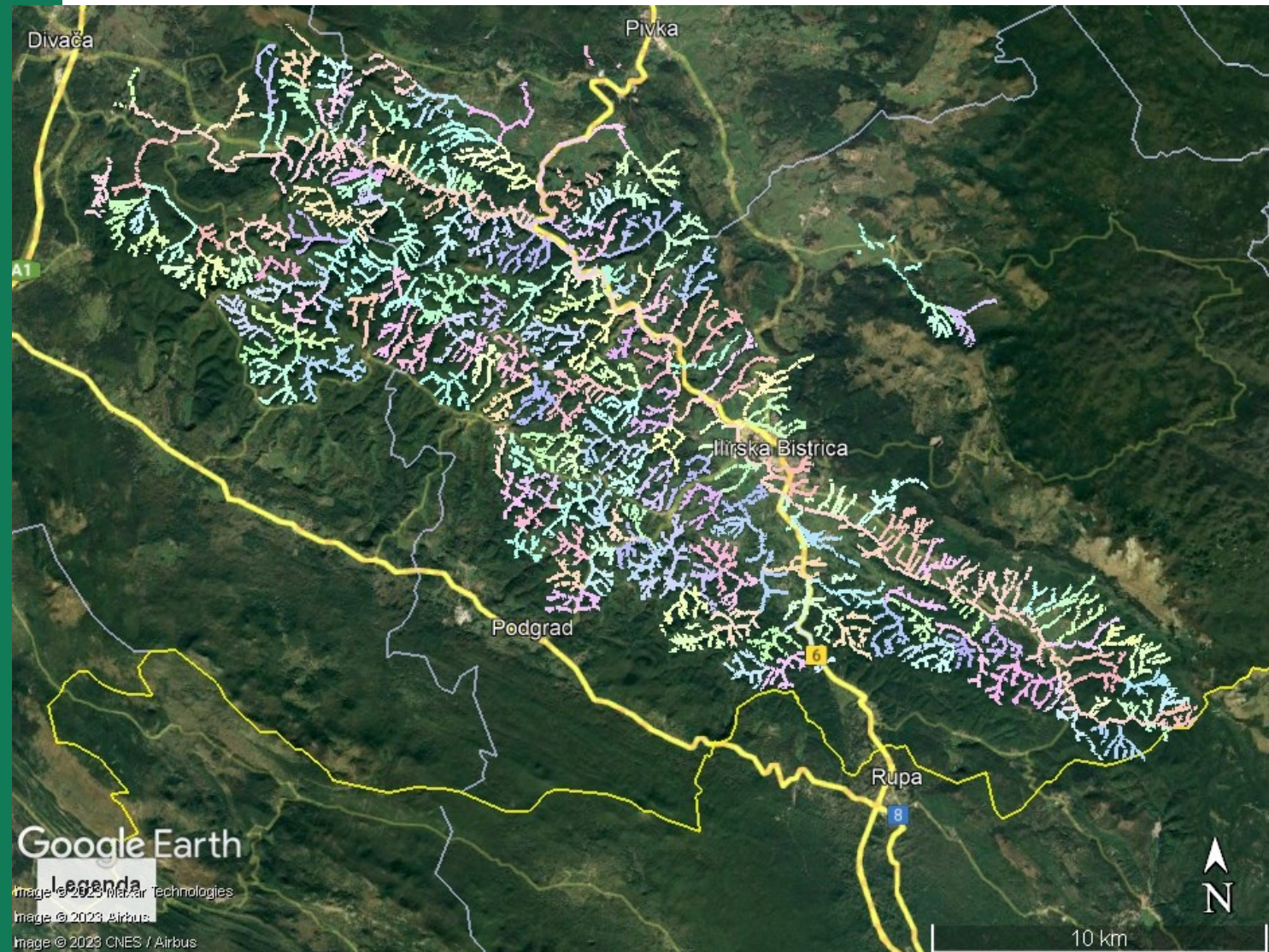
Pollution

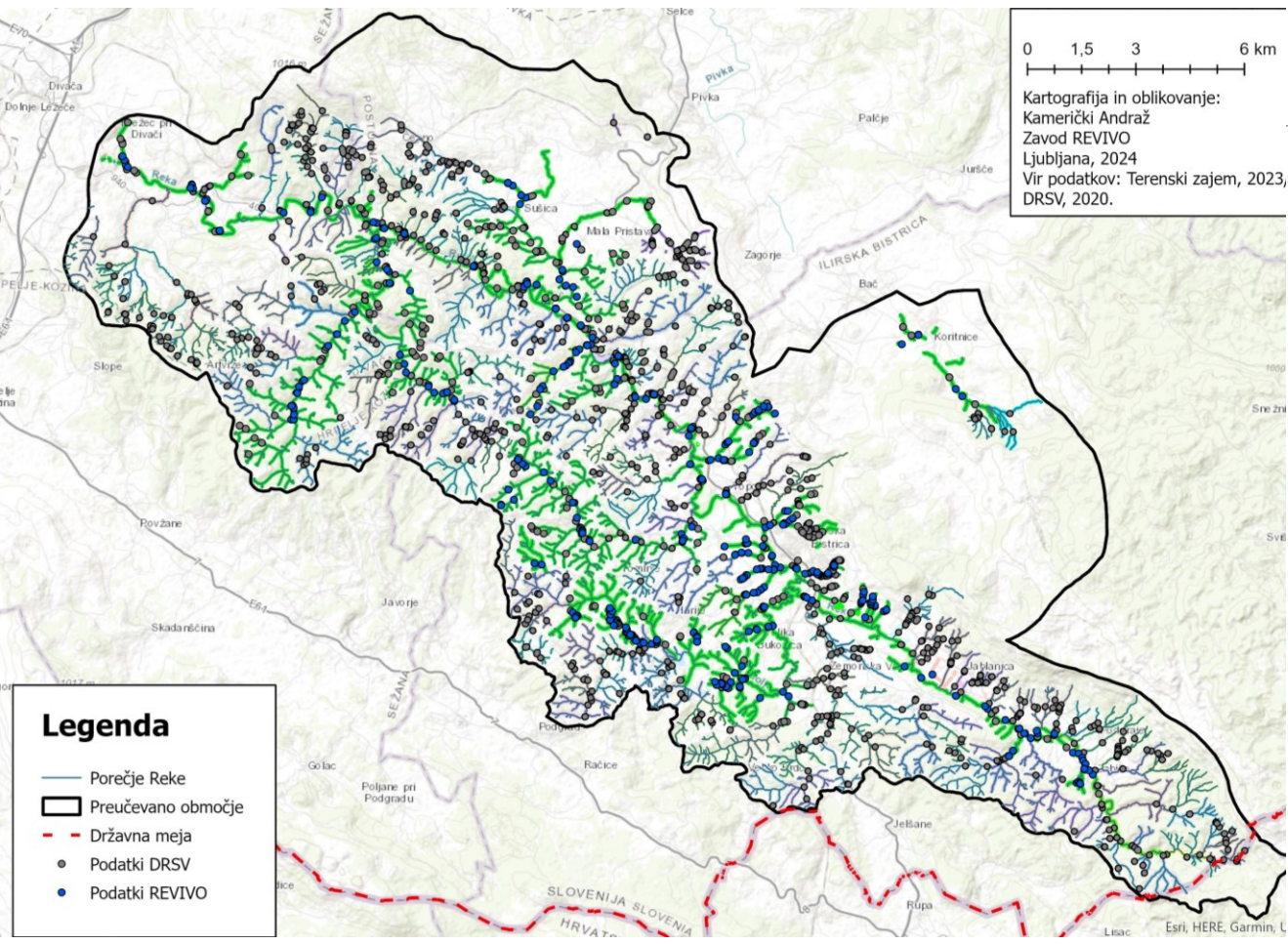


„Nature Restoration Law“

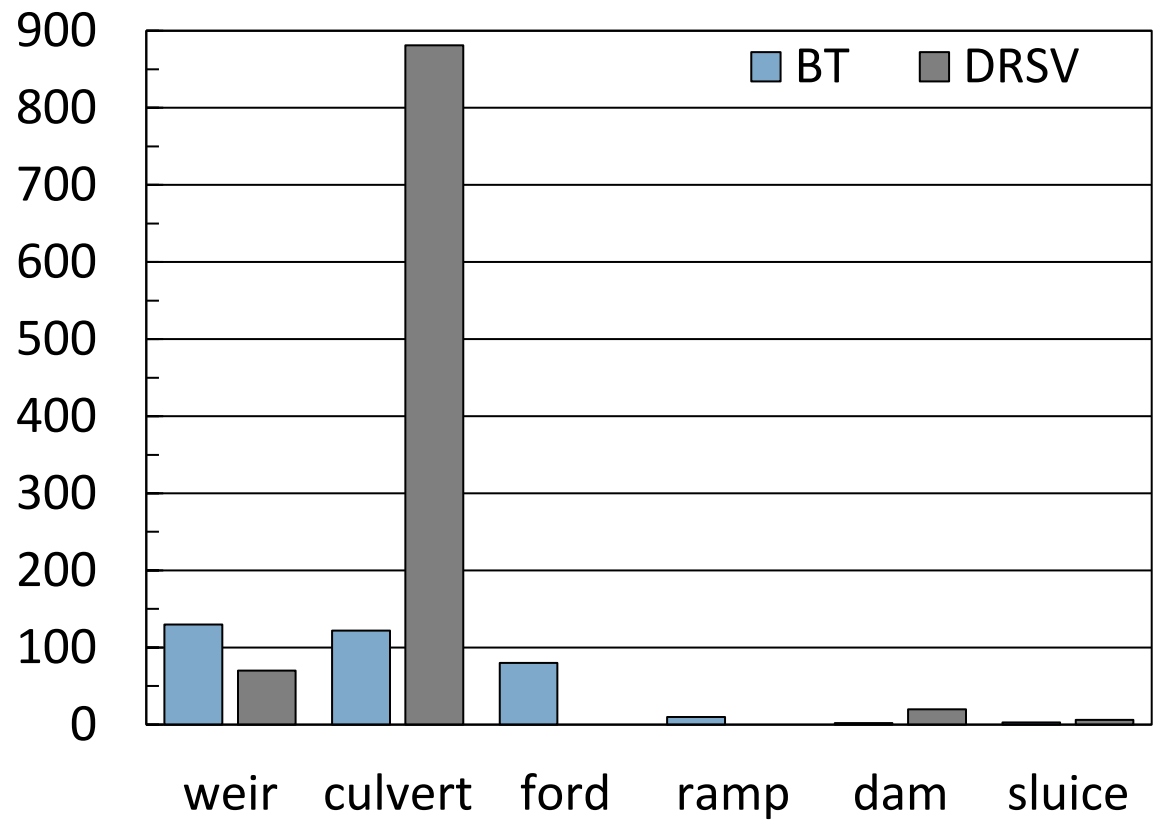
Reka river basin

- 1073 km
- 977 barriers in national database;
- 347 identified barriers by participatns
- 34 % → 365 km (checked zone);

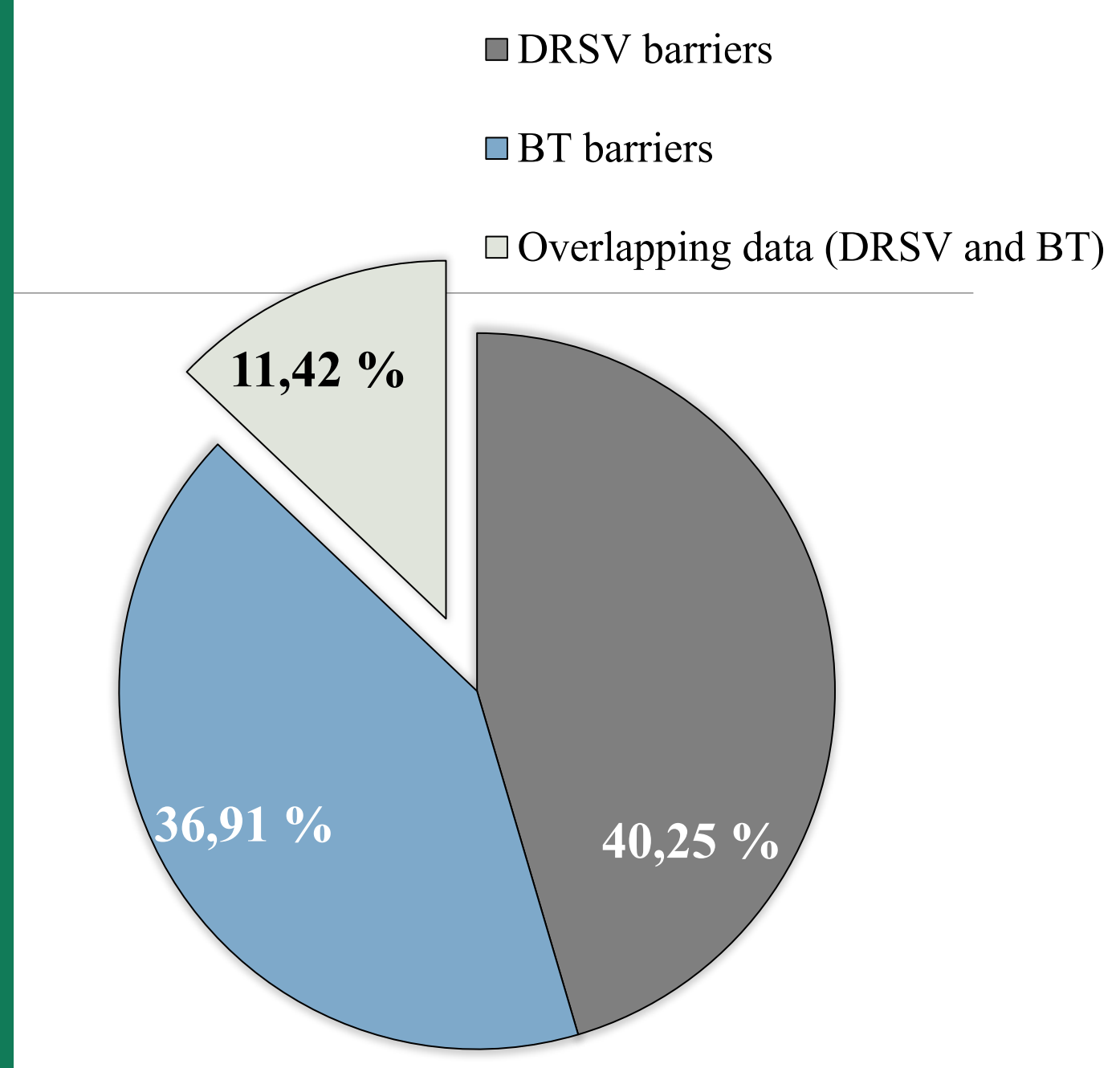




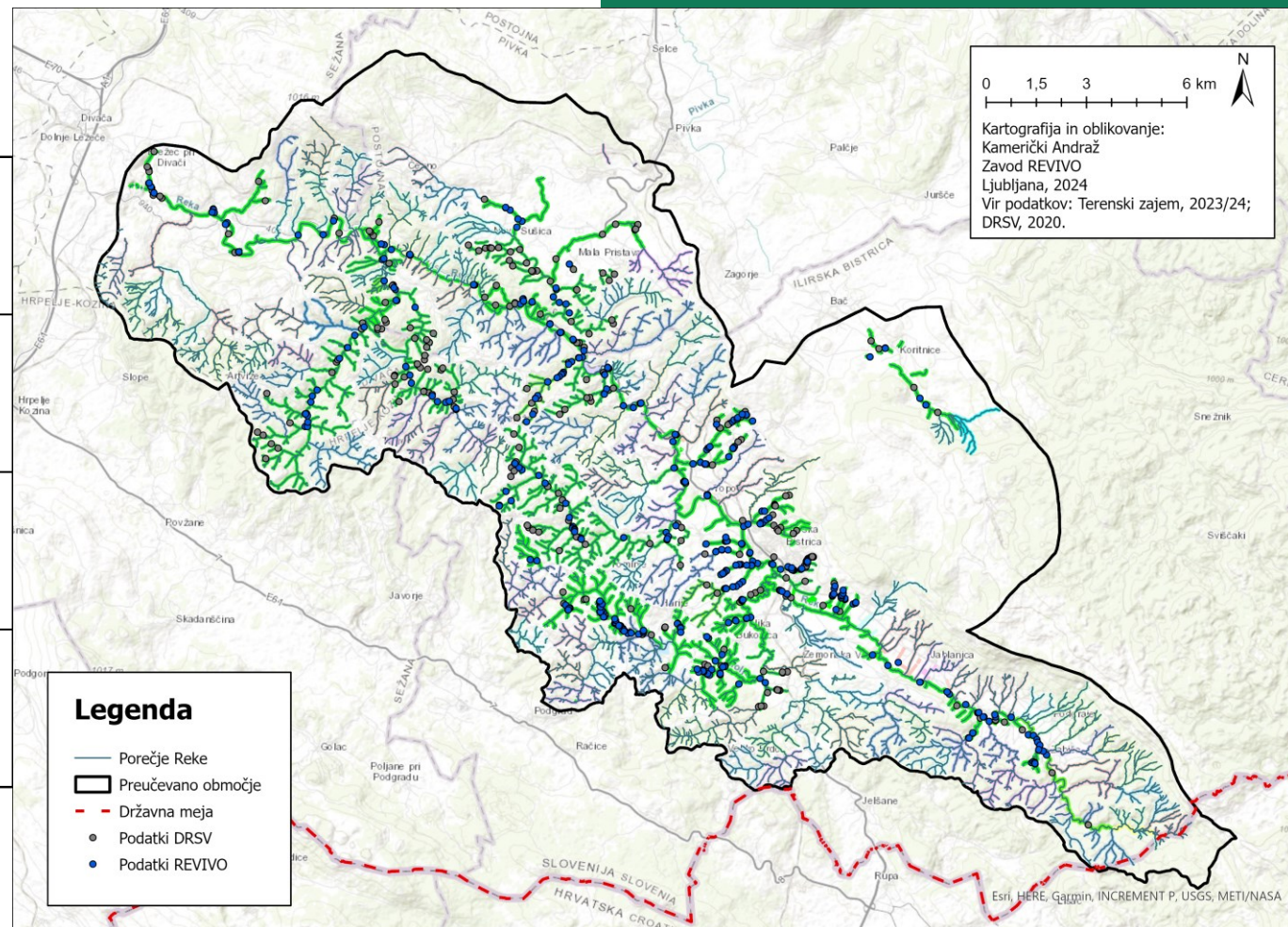
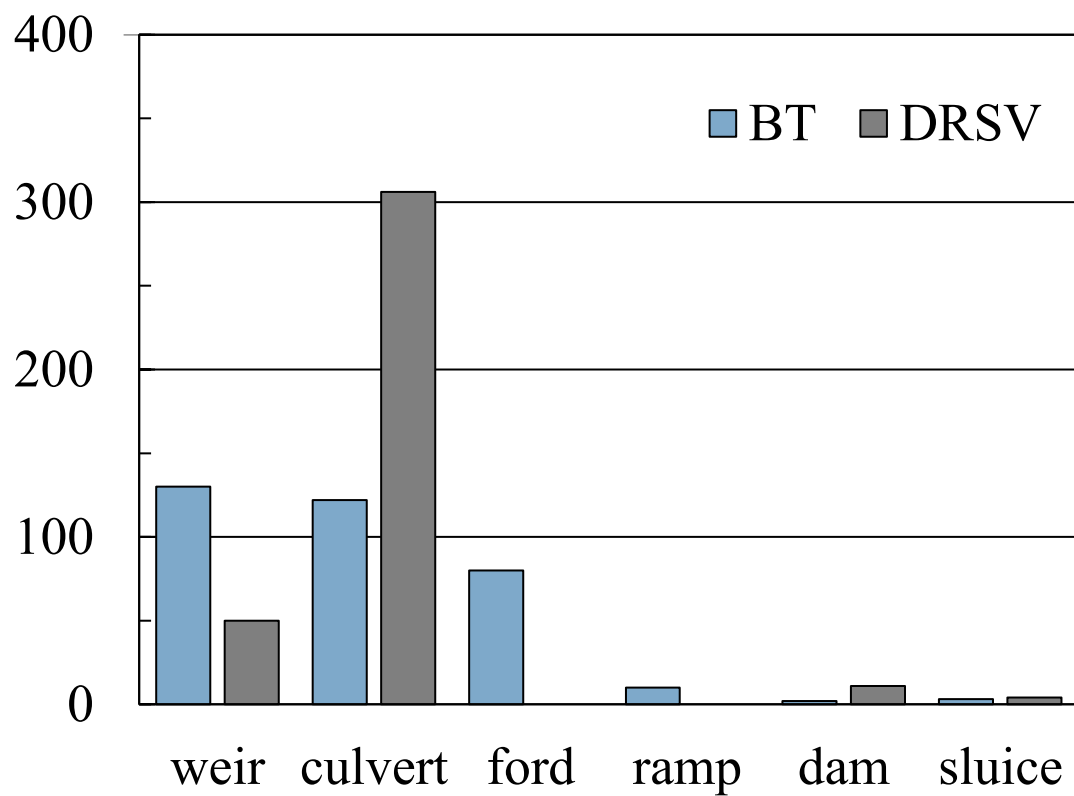
No. of river barriers



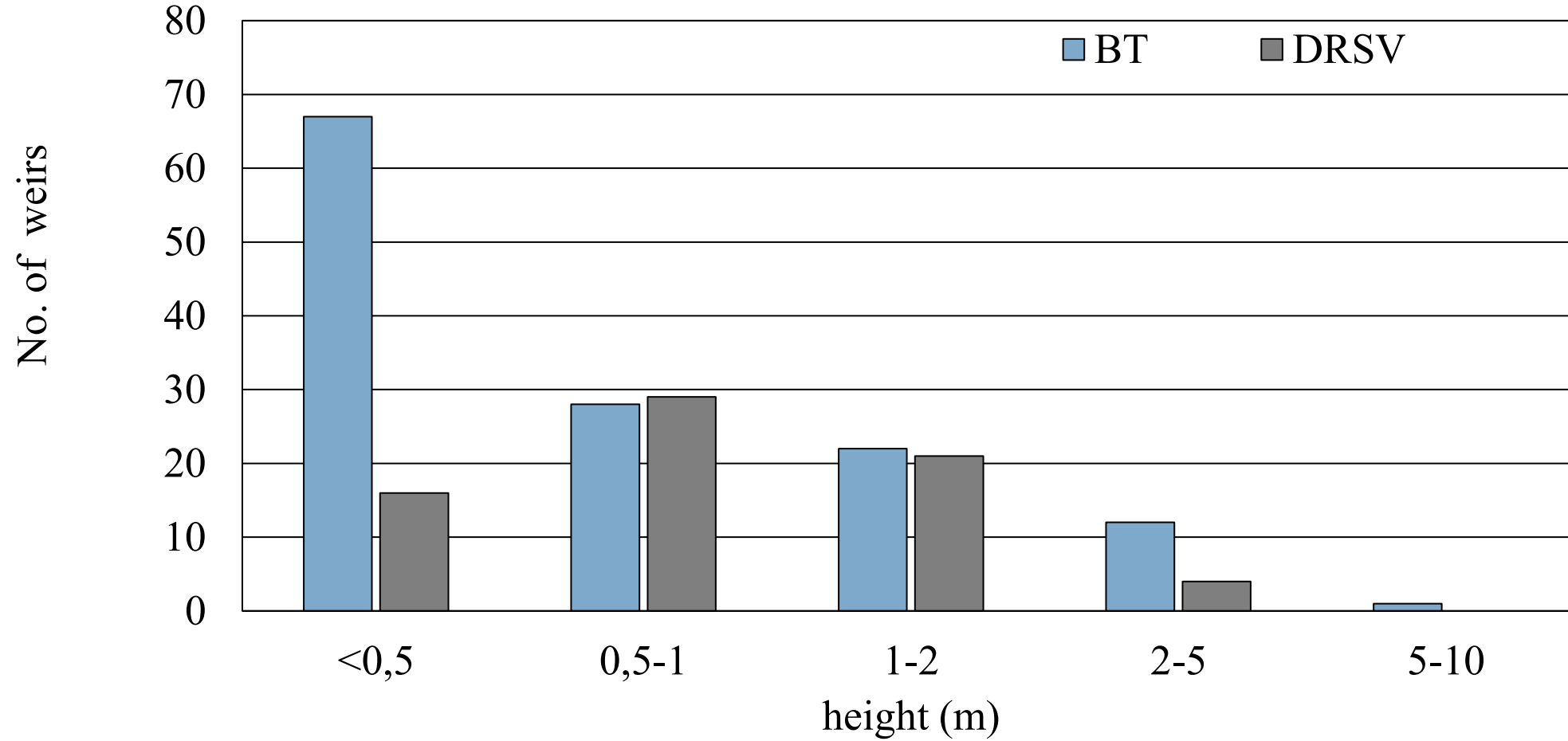
- 371 barriers inside checked zone;
- 347 barriers identified by participatns;
- (669 all, 269 „other“, 53 duplicates)



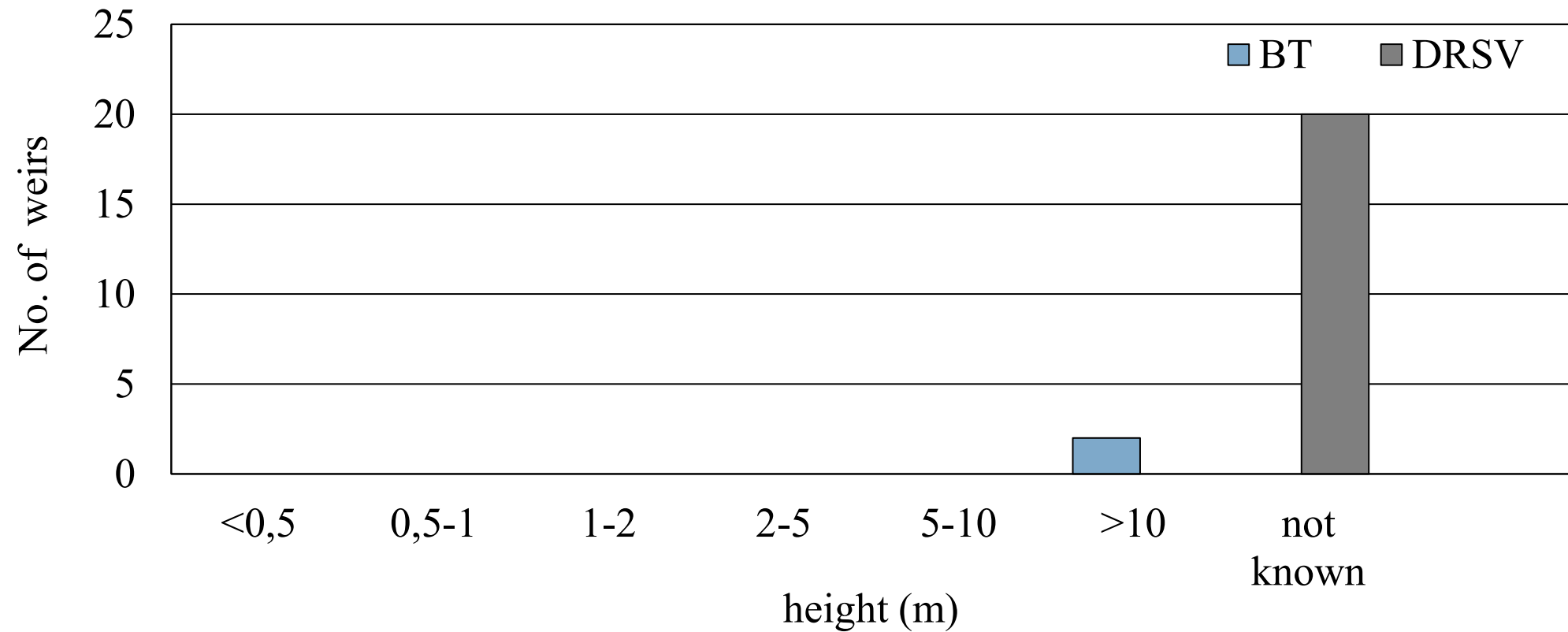
No. of river barriers



Weirs height

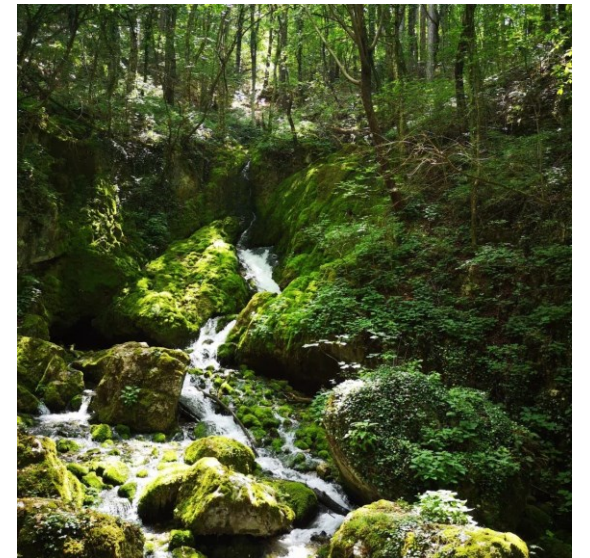


Dams height



CONCLUSIONS

- In Slovenia (2021) every 720 m is a river barrier (national data base);
- Reka River Basin - every 574 m a river barrier (Citizen science, *Natura 2000 site);
- Official data lack at least 41,67 % → not 977 barriers but at least 1675;
- Low awareness among general public;
- How to remove barriers if we do not know where they are?





Thank you !

Check the video:

