



Funded by the LIFE
Program of the EU

LIFE ÁGUEDA

RESTORING RIVER CONNECTIVITY FOR MIGRATORY FISH IN THE VOUGA RIVER BASIN

(LIFE16 ENV/PT/000411)



Sílvia Pedro, P.R. Almeida et al.

Universidade de Évora / MARE

15 April 2024



UNIVERSIDADE
DE ÉVORA



MARE



ÁGUEDA
CÂMARA MUNICIPAL



AQUALOGUS
Engenharia e Ambiente



MORA
MUNICÍPIO
MORA-CABEÇÃO-PAIVA-BROTAS



FLUVIÁRIO DE MORA



DOCAPESCA
PORTOS E LOTAS, S.A.



Location: Vouga river basin, Central Portugal

Duration: Aug.2017 to Jul.2024

Budget: 3 324,804 € (60% EU)



Coordinating Beneficiary:



UNIVERSIDADE DE ÉVORA



Associated Beneficiary:



ÁGUEDA

CÂMARA MUNICIPAL



MORA MUNICÍPIO



FLUVIÁRIO DE MORA



AQUALOGUS Engenharia e Ambiente



DOCAPESCA PORTOS E LOTAS, S.A.

Institutional Support:



apa Agência Portuguesa do Ambiente



ICNF Instituto da Conservação da Natureza e das Florestas



DGRM



IPMA

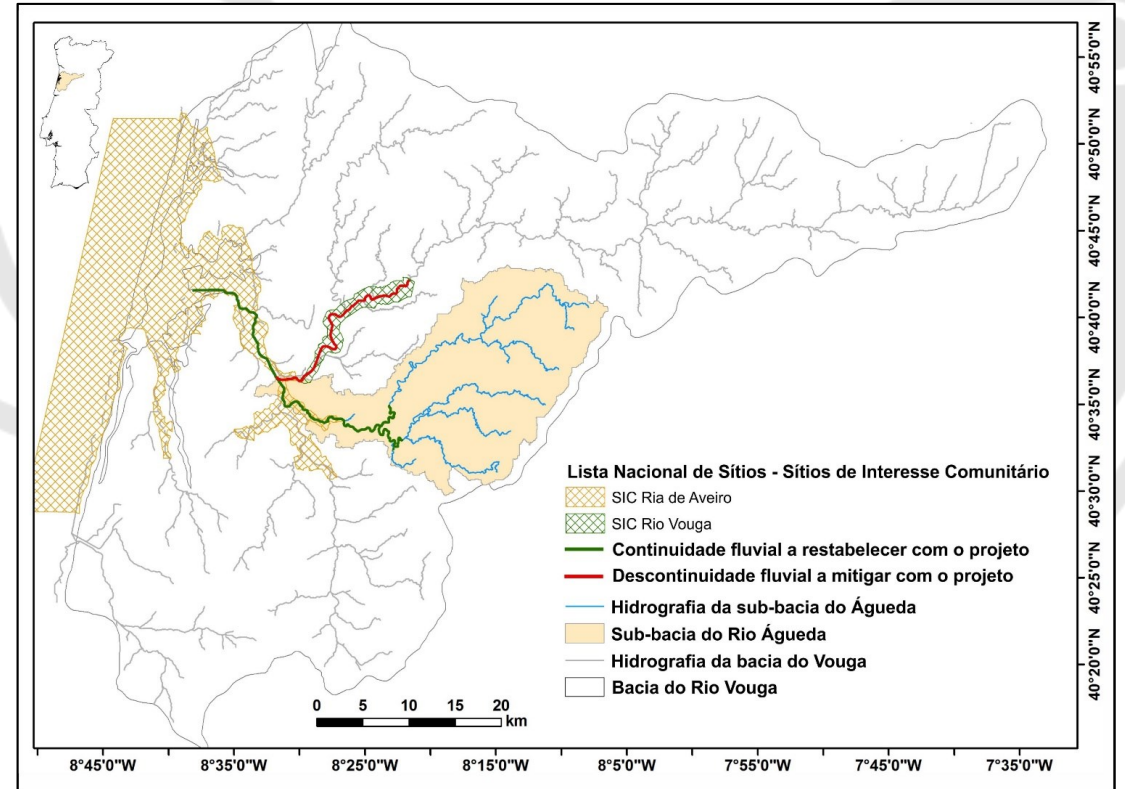


REPÚBLICA PORTUGUESA SECRETÁRIO DE ESTADO DAS PESCAS

Other Support:

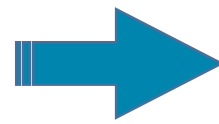


THE NAVIGATOR COMPANY



LIFE ÁGUEDA | OBJECTIVE

Elimination of hydro-morphological pressures



Reestablishment of conditions for a **Good Ecological Status** (WFD; RBMP).



➤ Proposed solutions and key actions:

- Integration of **demonstrative solutions for re-naturalizing river morphology**
- **Recreational and commercial fisheries management**
 - Nature-like fish passages
 - Removal of river barriers and re-naturalization of the river bed
- **Stakeholders' engagement and compatibility of ecosystem uses**
 - Translocation program of juvenile European eels ;
 - Riparian habitat restoration.



LIFE ÁGUEDA | TARGET SPECIES

Anadromous



Sea lamprey,
Petromyzon marinus



Allis shad, *Alosa alosa*



Sea trout, *Salmo trutta*

Catadromous



Thin lipped grey mullet,
Chelon ramada



European eel,
Anguilla anguilla

Potamodromous



Barbel,
Luciobarbus bocagei



Nase,
Pseudochondrostoma polylepis

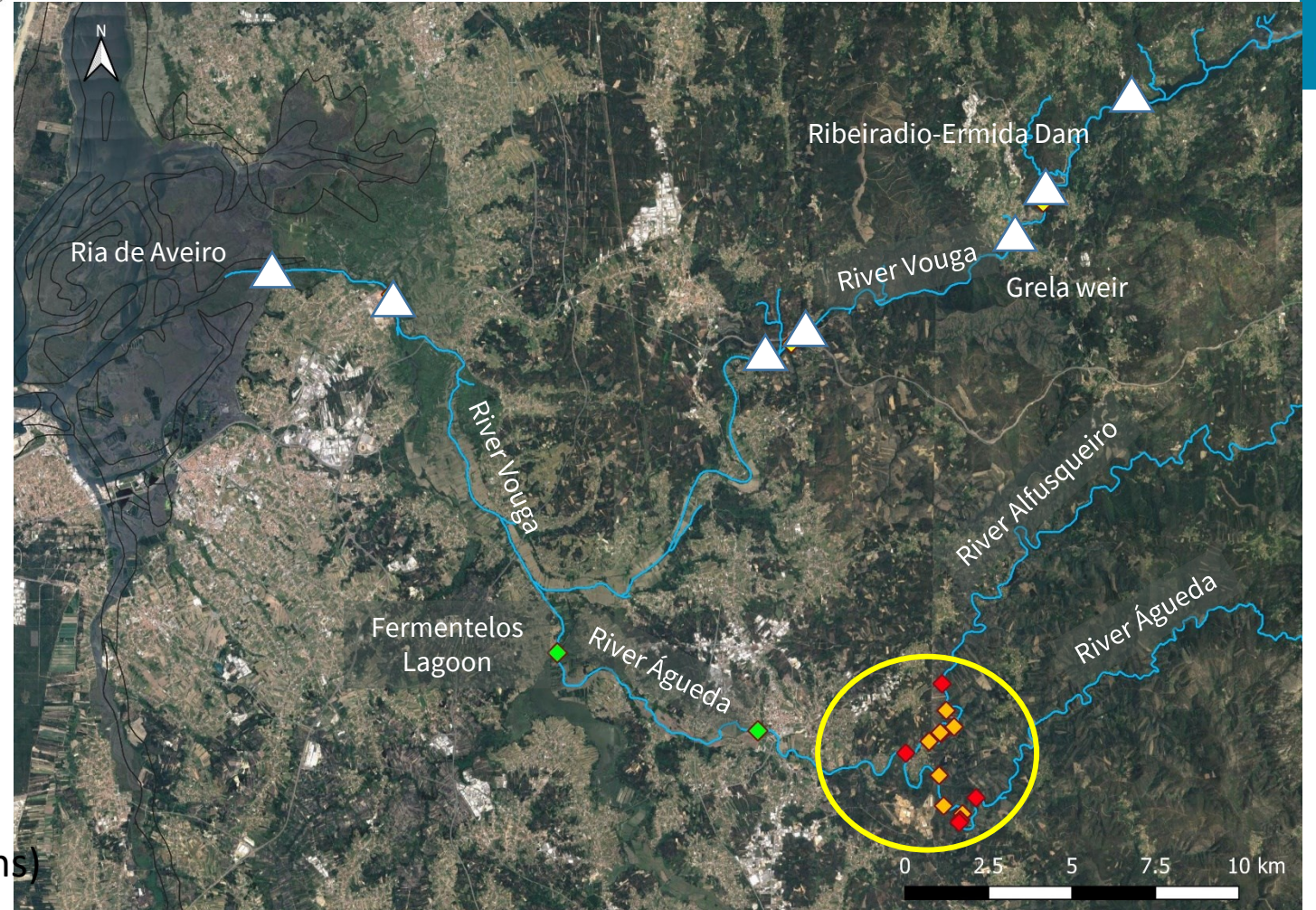


LIFE ÁGUEDA | IDENTIFICATION OF BARRIERS TO FISH MIGRATION

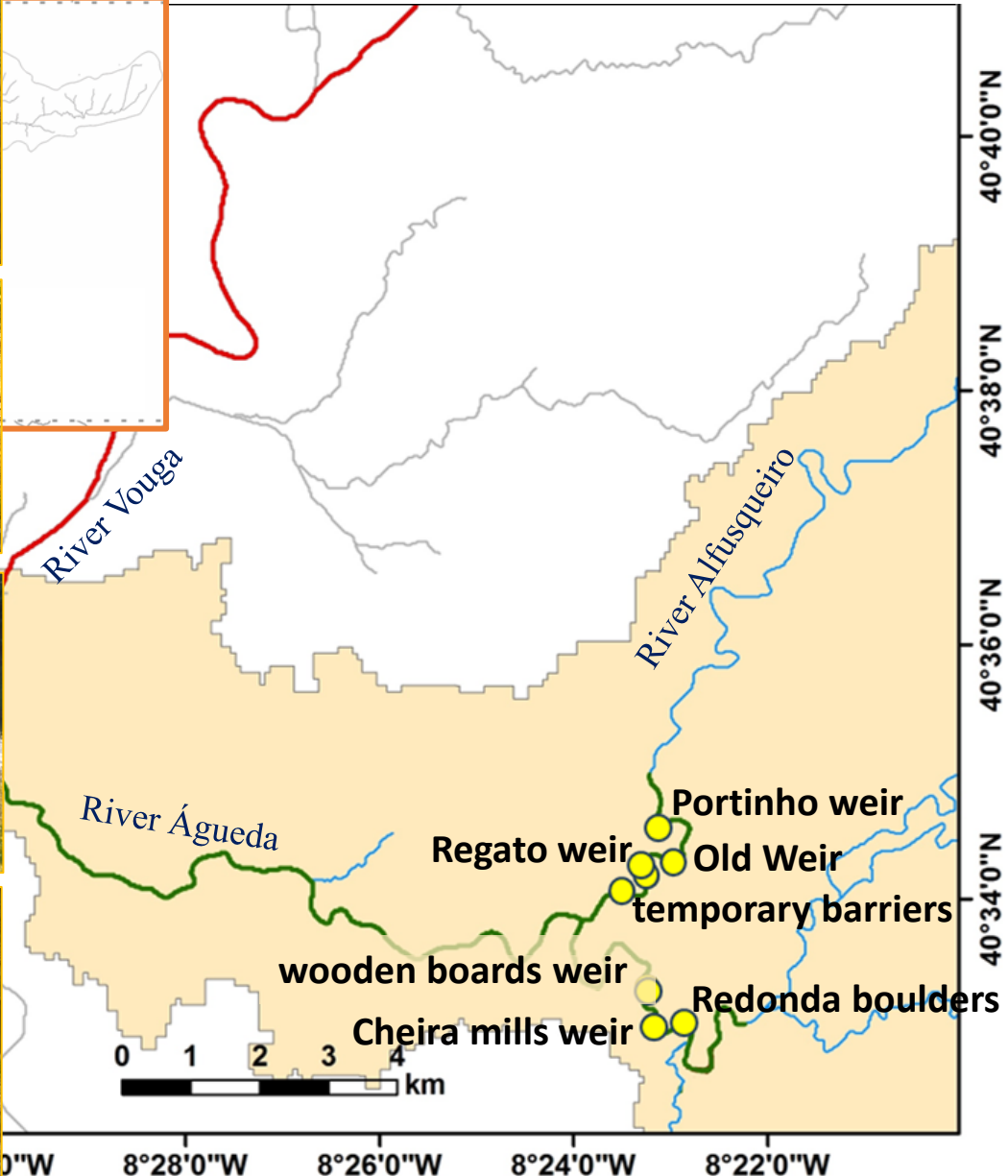
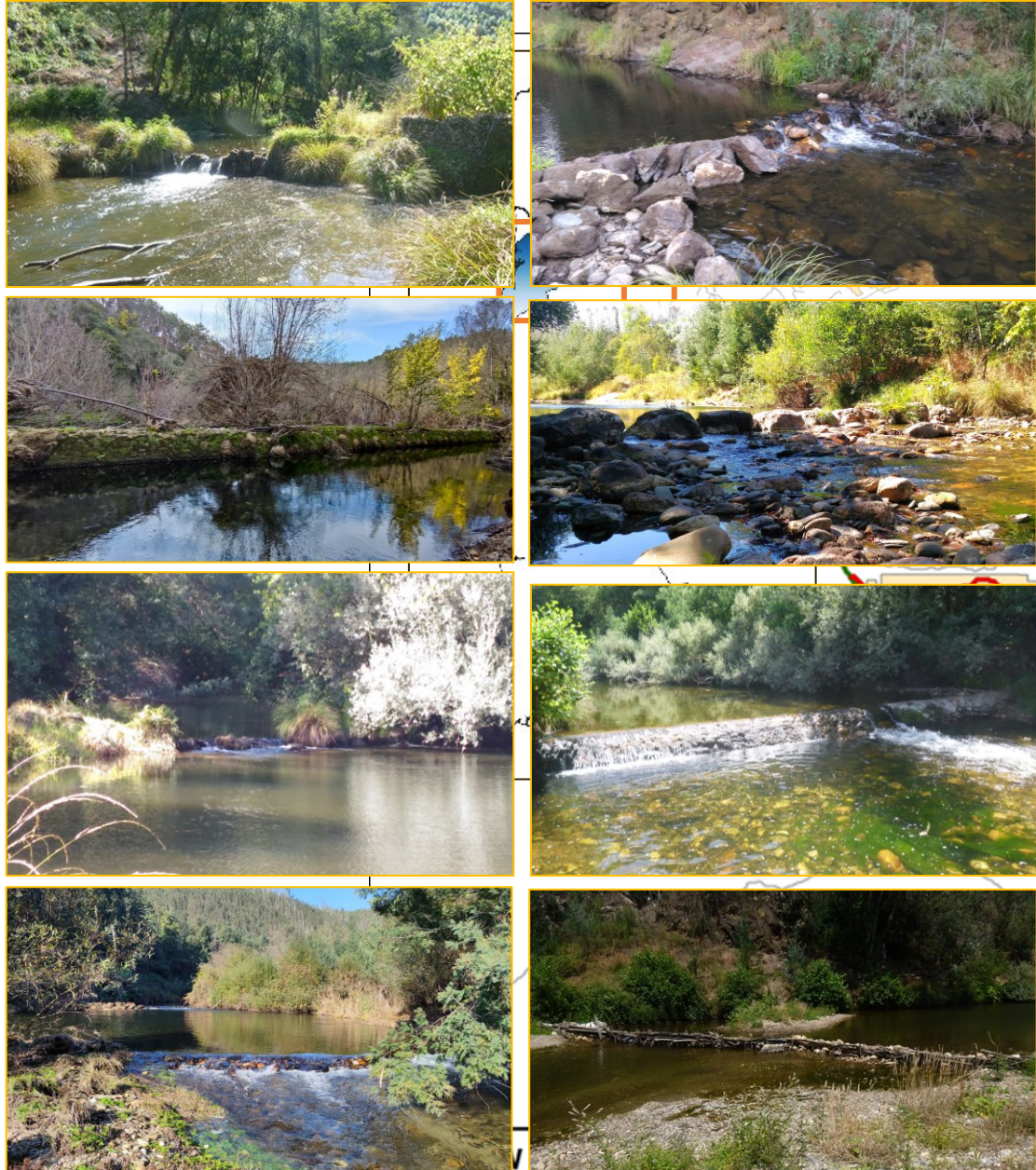


LIFE Águeda:

- ◆ - Type I (Fish pass devices)
- ◆ - Type II (Removals or structural adaptations)
- ◆ - Type III (Management plan)



LIFE ÁGUEDA | IDENTIFICATION OF BARRIERS TO FISH MIGRATION: **REMOVALS**





Regato weir
River Alfusqueiro





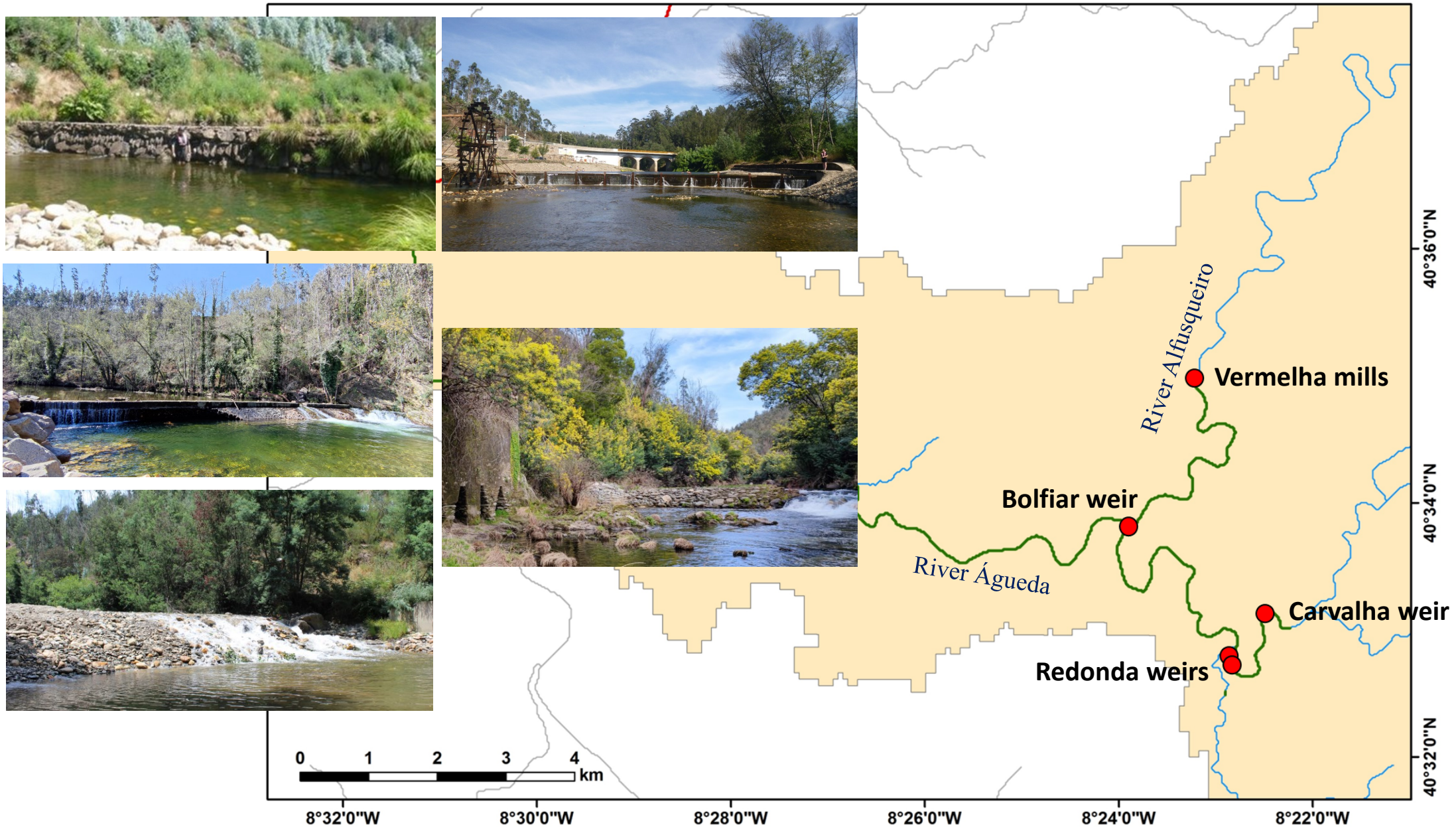
Old Weir (“Presa Velha”)
River Alfusqueiro





Cheira mills weir
River Águeda

LIFE ÁGUEDA | IDENTIFICATION OF BARRIERS TO FISH MIGRATION: **FISH PASSES**





Vermelha mills weir
River Alfusqueiro





Redonda weir (downstream)
River Águeda





Bolfiar weir
River Águeda





Carvalha weir
River Águeda





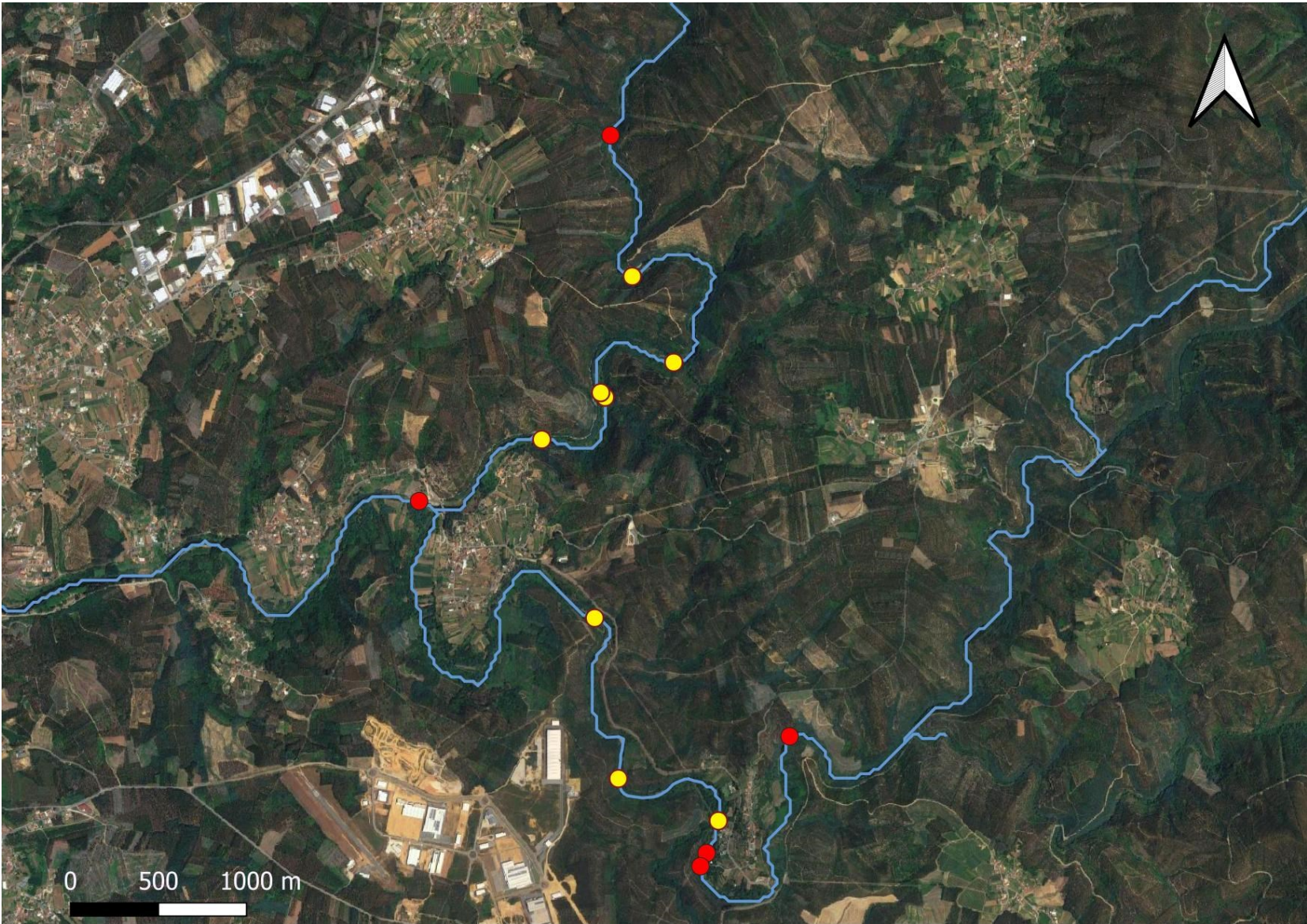
Redonda weir (upstream)
River Águeda



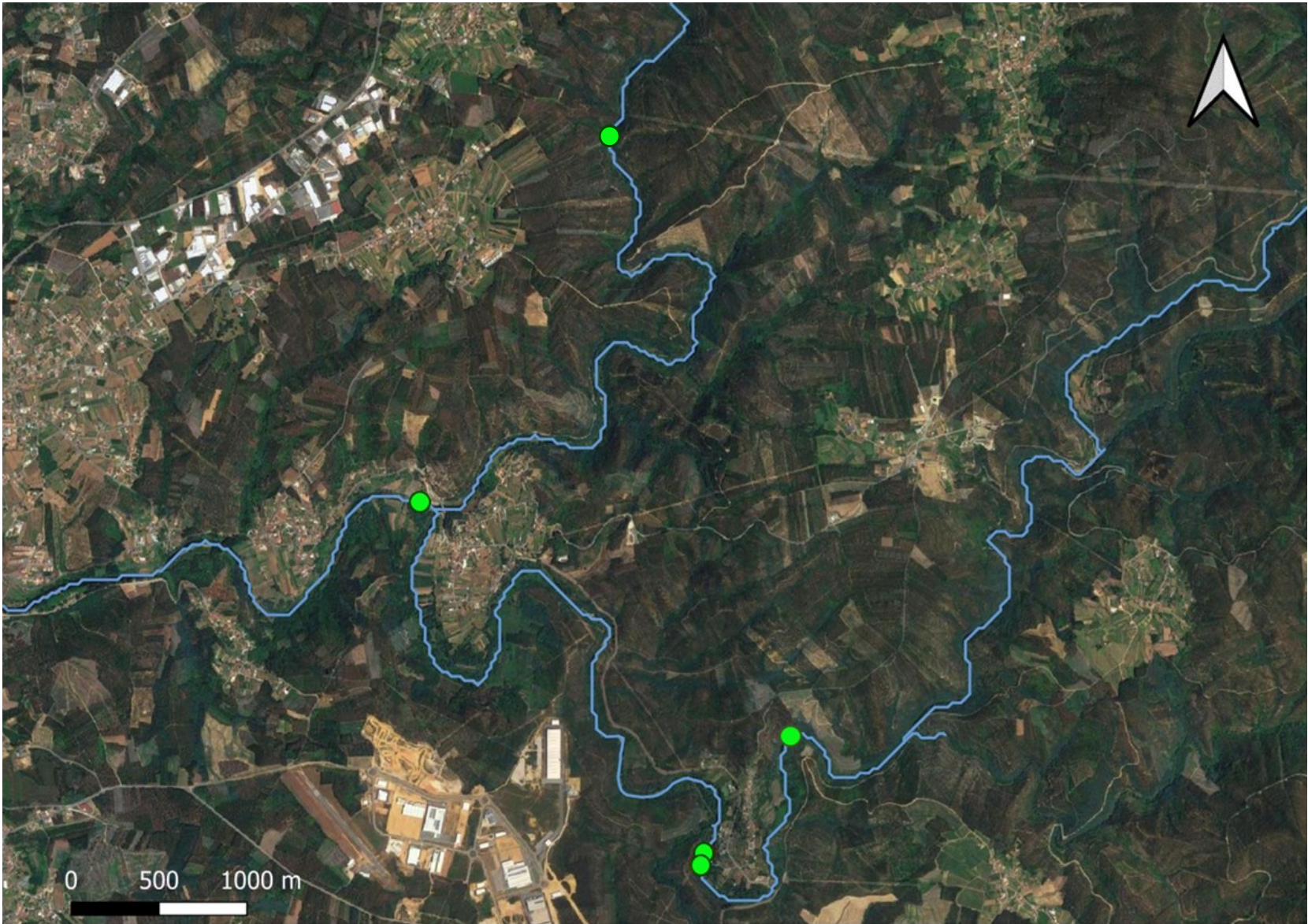


Unforeseen users

LIFE ÁGUEDA | HOW WE STARTED



LIFE ÁGUEDA | NOW



WHAT'S NEXT?



INNOVATIVE AND INTEGRATED SOLUTIONS TO MITIGATE HYDROMORPHOLOGICAL PRESSURES AND ENHANCE ECOLOGICAL STATUS IN THE LIMA AND VOUGA BASINS

Leading partner:



Technical support:



Beneficiary partners:

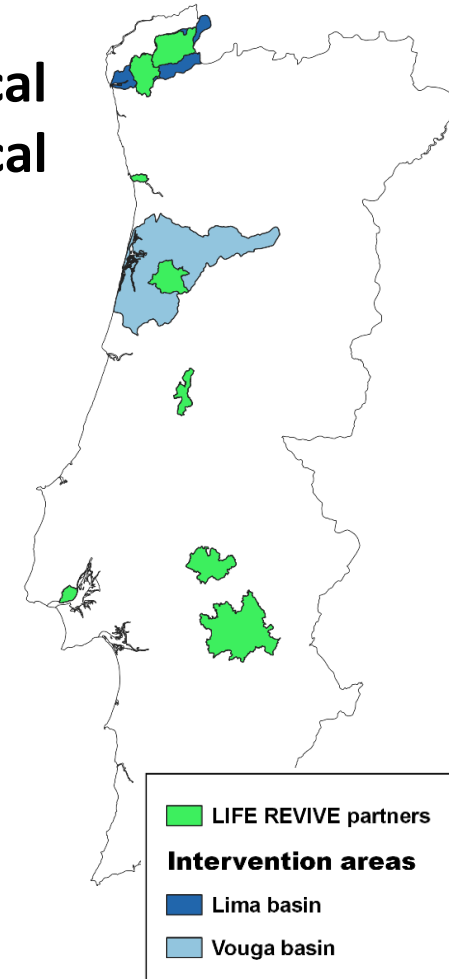


Develop innovative and integrated solutions to mitigate hydromorphological pressures previously identified in RBMPs and enhance local and regional ecological status

- ✓ 8 BENEFICIARY PARTNERS
- ✓ 10 ASSOCIATED PARTNERS
- ✓ +30 SUPPORTING ENTITIES

TOTAL BUDGET PROPOSED: € 9 636 574.52

REQUESTED EU CONTRIBUTION (60%): € 5 781 944.71



■ LIFE REVIVE partners
Intervention areas
■ Lima basin
■ Vouga basin

1. RESTORATION OF RIVER CONNECTIVITY



2. CONTROL OF AQUATIC IAS



3. RESTOCKING/TRANSLOCATION INDICATOR SPECIES



Leading partner:



Technical support:



Other beneficiary partners:





 <http://www.life-agueda.uevora.pt>

 life.agueda@uevora.pt

 @LIFE.AGUEDA

 @LifeAgueda ()

Thank you!



List of Authors:

Sílvia Pedro, Carlos M. Alexandre, Catarina S. Mateus, Bernardo R. Quintella, Joana Boavida-Portugal, Maria João Lança, Ana F. Belo, Esmeralda Pereira, Ana S. Rato, Inês C. Oliveira, Sara Silva and Pedro R. Almeida

This presentation only reflects the views of the project team, and neither the Agency nor the European Union is responsible for the content or use made of any information contained therein.